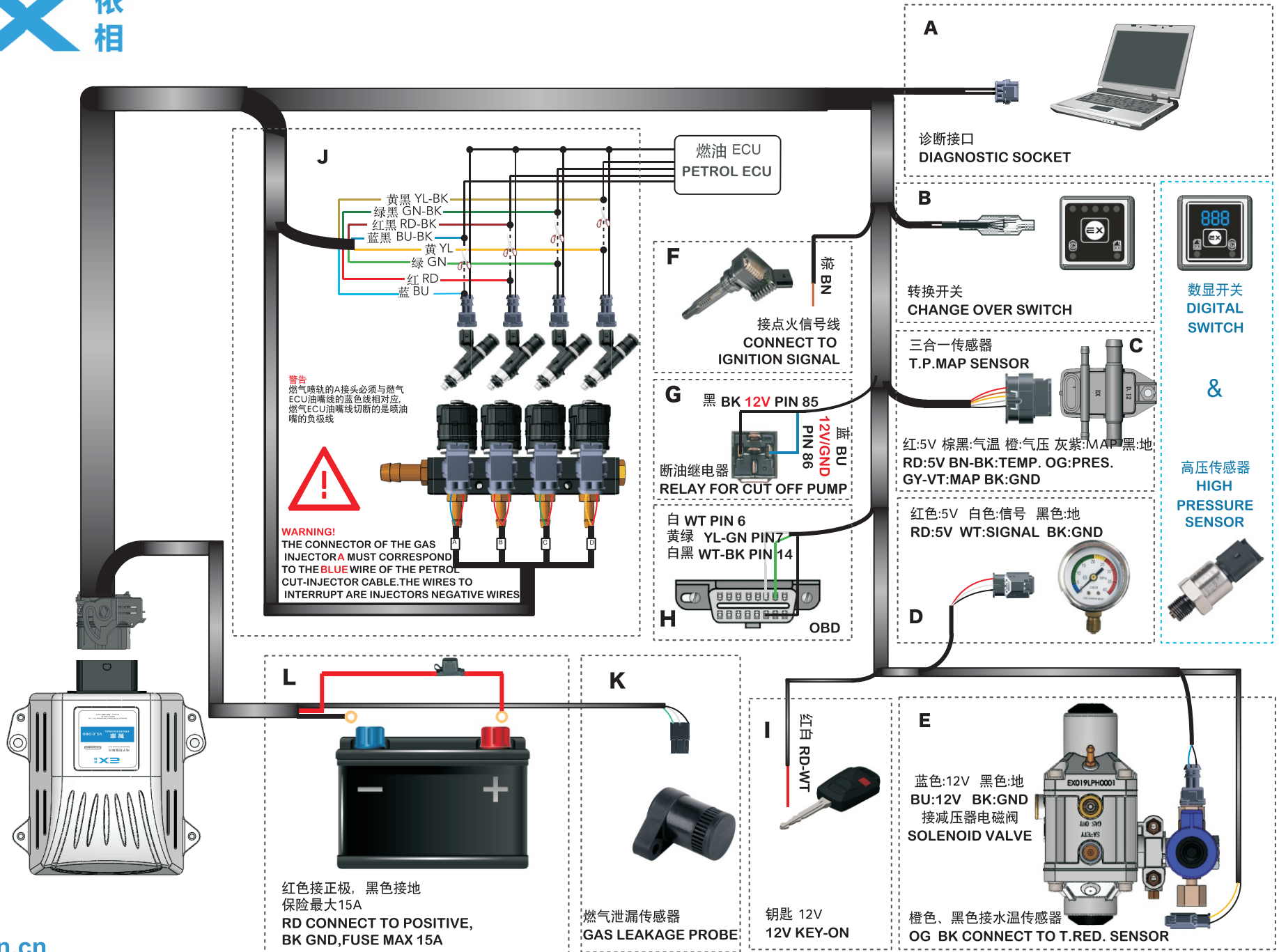


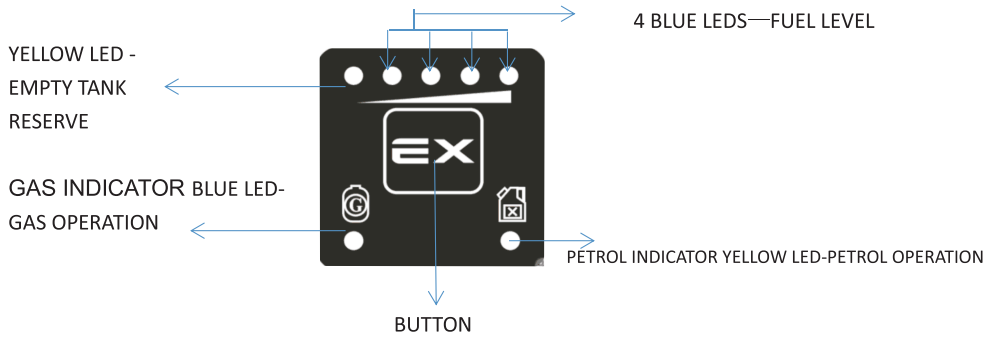
EX 5.0 接线图
EX 5.0 CONNECTION DIAGRAM



● **CHANGE OVER SWITCH**

Operating Description

The charge over switch supplied with the kit has one button, 7 LEDs and an internal buzzer



PETROL TO GAS

Open the keys to start engine, press the **BUTTON**, the buzzer bleat, **GAS INDICATOR BLUE LED** and **PETROL INDICATOR YELLOW LED** flashing — the control unit is prepared to start with petrol and switch automatically to **GAS**. Press the accelerator pedal, the buzzer bleat again. **PETROL INDICATOR YELLOW LED** off —Gas Operation

GAS TO PETROL

GAS INDICATOR BLUE LED lighting —Gas Operation. Press the **BUTTON**, **GAS INDICATOR BLUE LED** off — **PETROL** Operation

FORCED GAS START FUNCTION

Open the keys, press the **BUTTON** more than 5s, the buzzer bleat, **GAS INDICATOR BLUE LED** flashing — into engine start with **GAS** mode.

YELLOW LED + 4 BLUE LED FUNCTION

Fuel level indicator, empty tank when **YELLOW LED** alarming, while the 4 **BLUE LEDS** indicate the fuel level(1/4,2/4,3/4,4/4).

Notes: Four lights flashing with alarm sound for maintenance alarm!

Installation Description

- a) Change-over switch is installed at the position of operator's easy to see and operate and is fixed reliably;
- b) When plug and unplug the switch connector, the operation must be correct, to avoid false connection or damage.

● **ELECTRONIC CONTROL UNIT**

Notes for installation and operation of ECU:

- a) When the ECU is installed on the car, it shall be away from heat source, magnetic field, and pay attention to waterproof,oil proof and dust proof, and ensure good ventilation and heat dissipation measures;
- b) The ECU power supply must be cut off before plugging and unplugging the ECU connector, so as not to burn the ECU or other components;
- c) Ensure that the ECU is fixed and the connector is in a horizontal downward position, so as to avoid direct flow of liquid into the ECU connector and result in ECU corrosion failure;

NO	NO	OK

● **3 IN 1 SENSOR**

Notes for installation and operation of 3 in 1 sensor:

	OK	NO